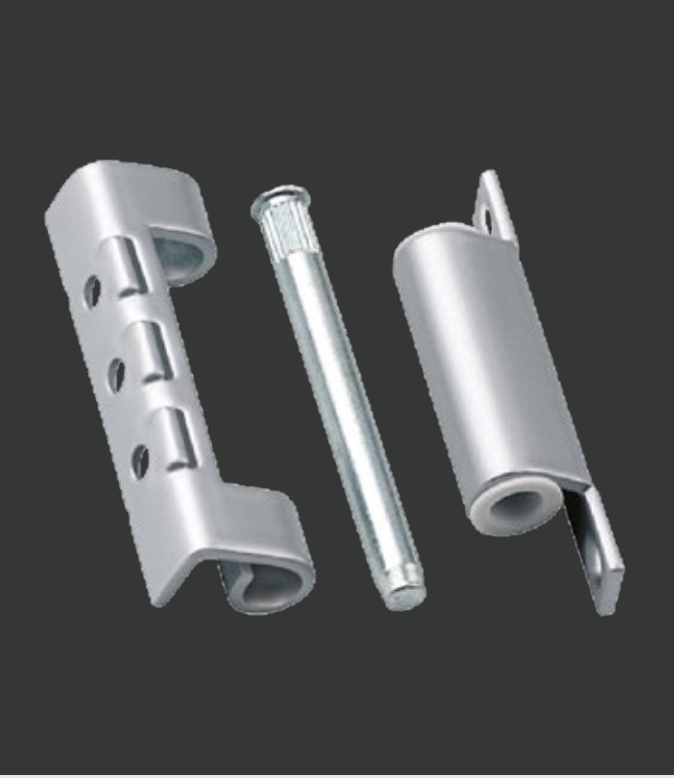


73'lük Çelik Mentefe Steel Hinge 73

MERKEZLEMELI/MERKEZLEMESIZ
SELF-CENTERING / OFF-CENTER



MONTAJ VE KULLANMA KILAVUZU

INTRODUCTION AND USER MANUAL



KALE KAPI PENCERE


CE EN 1935:2002
2765 14301309

CE EN 1935:2002
2765 14301309 

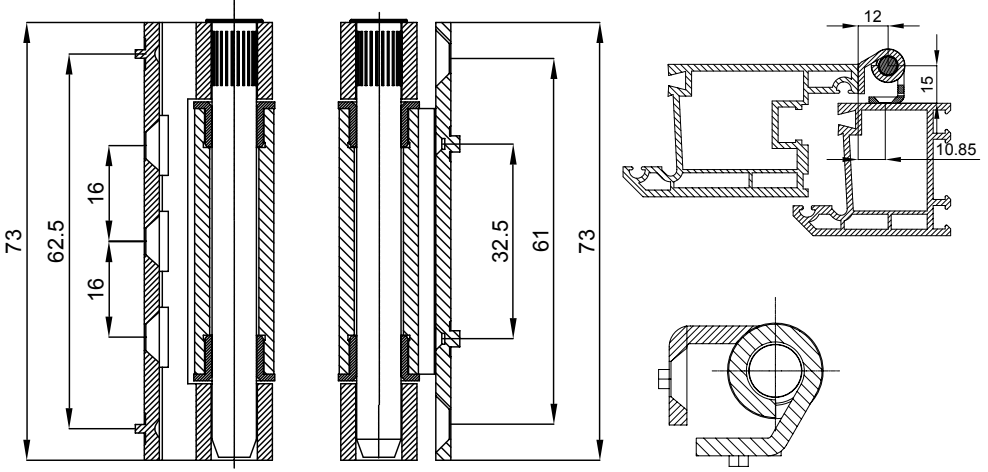
İÇİNDEKİLER

- 73 ÇELİK MENTEŞE (Merkezlemeli)4
- 73 ÇELİK MENTEŞE (Merkezlemesiz)5
- MONTAJ6

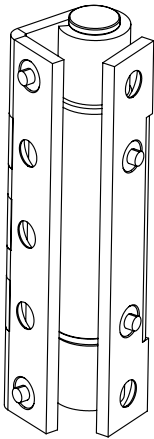
73 ÇELİK MENTEŞE

Merkezlemeli

SİSTEM ÖZELLİKLERİ

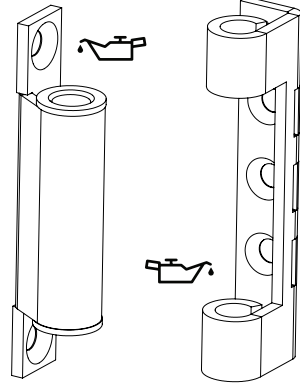


- Çelik gövdesi ve plastik burcu ile gelişmiş tasarımı sayesinde uzun yıllar sorunsuz çalışma
- Korozyonu önleyen dayanıklı kaplama ve boyama sistemi
- Yüzey Kaplama: Alkali Zinc-Plated Surface 8-20 µ
- Menteşeler sağ veya sol yönde de kullanıma uygundur.



1-20001-00-00A
ÇELİK MENTEŞE 73

- Δ5: Siyah (RAL 9011)
- 6: Kahverengi (RAL 8014)
- 8: Beyaz (RAL 9016)
- 9: Bej (RAL 1001)
- A: Açık Kahverengi (RAL 8003)



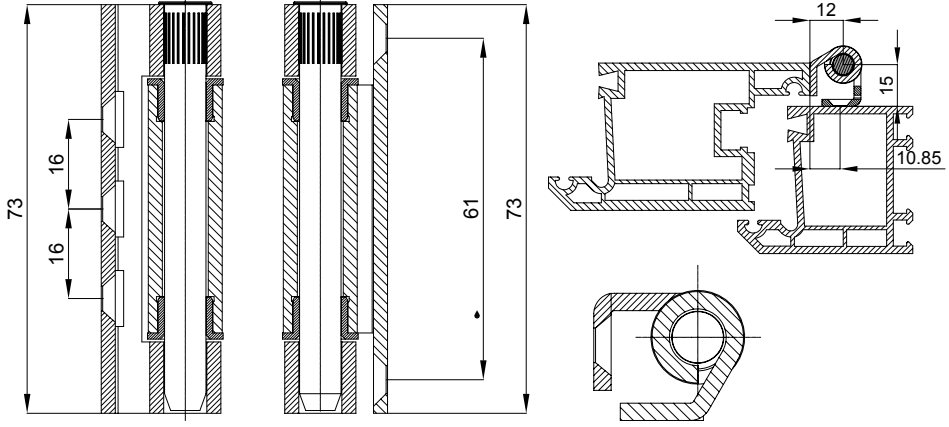
73 ÇELİK MENTEŞE
(ERKEK)

73 ÇELİK MENTEŞE
(DİŞİ)

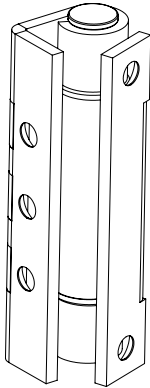
73 ÇELİK MENTEŞE

Merkezlemesiz

SİSTEM ÖZELLİKLERİ

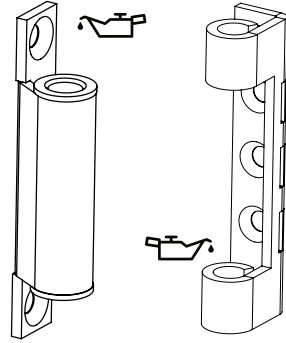


- Çelik gövdesi ve plastik burcu ile gelişmiş tasarımı sayesinde uzun yıllar sorunsuz çalışma
- Korozyonu önleyen dayanıklı kaplama ve boyama sistemi
- Yüzey Kaplama: Alkali Zinc-Plated Surface 8-20 µ
- Menteşeler sağ veya sol yönde de kullanıma uygundur.



1-20004-00-00A
ÇELİK MENTEŞE 73
MERKEZLEMESİZ

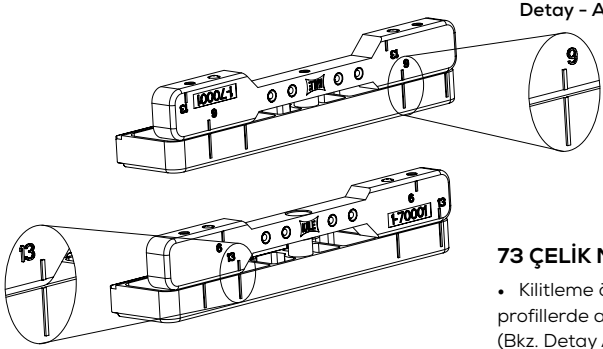
- Δ 5: Siyah (RAL 9011)
6: Kahverengi (RAL 8014)
8: Beyaz (RAL 9016)
9: Bej (RAL 1001)
A: Açık Kahverengi (RAL 8003)



73 ÇELİK MENTEŞE
(ERKEK)

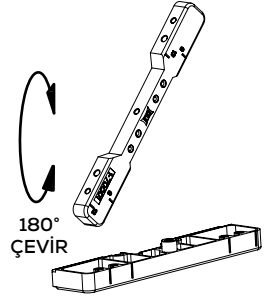
73 ÇELİK MENTEŞE
(DİŞİ)

MONTAJ



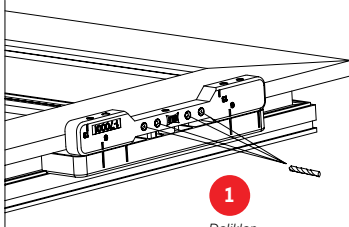
Detay - B

Art. Nr.: 1-70001-00 73
ÇELİK MENTEŞE ŞABLONU

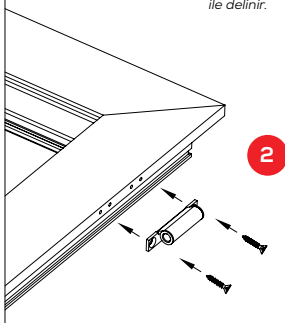


73 ÇELİK MENTEŞE ŞABLONU

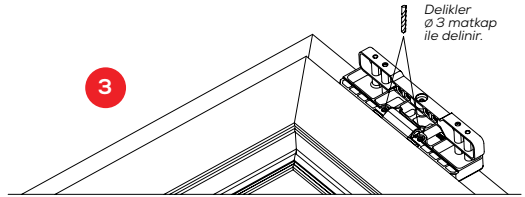
- Kilitleme ölçüsü 9 mm veya 13 mm olan profillerde aynı montaj şablonu kullanılmaktadır. (Bkz. Detay A - Detay B) tüm vidalama delikleri burçludur.
- Değiştirilen parça üzerinde bulunan 9 veya 13 ölçüsünden hangisi isteniyorsa parça 180° çevrilerek çizgiler birbirini karşılayacak şekilde takılıp şablon kullanılacaktır.



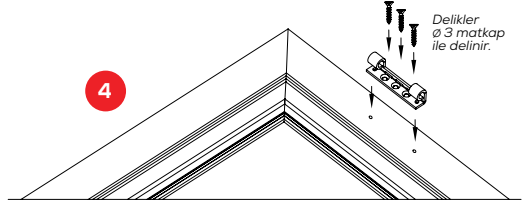
1
Delikler
ø 3 matkap
ile delinir.



2



3



4

- 1 Şablon yardımı ile 73 Çelik Menteşe (erkek) delikleri ø3 matkap ile delinir.
- 2 73 Çelik menteşe erkek vida ile montaj edilir.
- 3 Şablon yardımı ile 73 Çelik Menteşe (dişi) delikleri ø3 matkap ile delinir.
- 4 Daha sonra 73 Çelik Menteşe dişi vida ile montaj edilir.
- 5 Kanat, kasaya 73 Çelik Menteşe pimi ile bağlanır.

BAKIM

Yılda 2 kere çalışan aksamalar yağlanmalıdır.

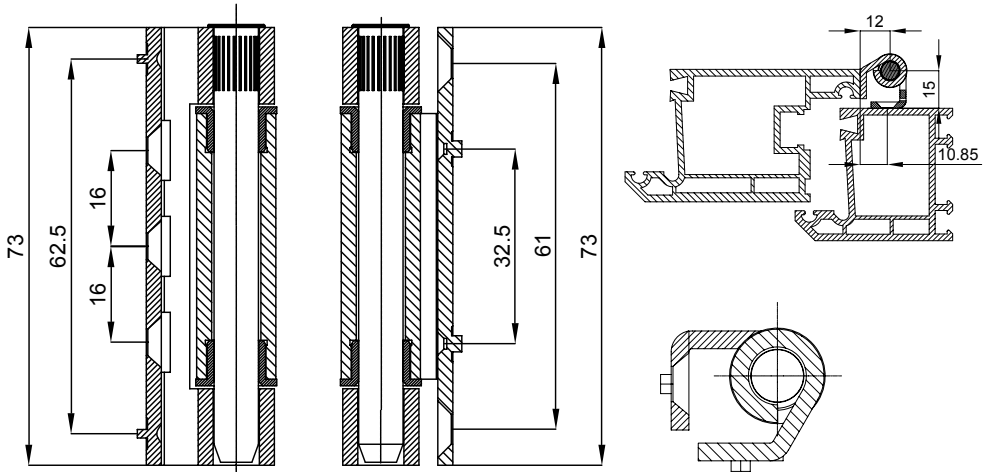
CONTENTS

- STEEL HINGE 73 (Self-Centered)4
- STEEL HINGE 73 (Off-Centered)5
- INSTALLATION.....6

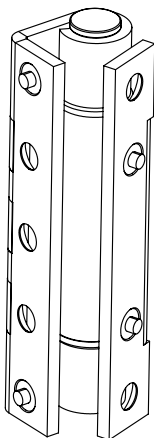
STEEL HINGE 73

Self-Centered

SYSTEM PROPERTIES

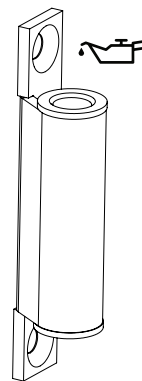


- Long-lasting, trouble-free function through advanced design with steel body and plastic bushings
- Corrosion-resistant plating and painting system surface
- Plating: Alkali ZINC-Plated Surface 8-20 μ
- The hinges can be used for both right and left-handed doors.

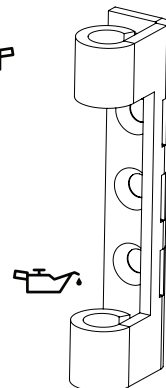


1-20001-00-00A
STEEL HINGE 73

Δ5: BLACK (RAL 9011)
6: BROWN (RAL 8014)
8: WHITE (RAL 9016)
9: BEIGE (RAL 1001)
A: LIGHT BROWN (RAL 8003)



STEEL HINGE 73
(Sash Hinge)

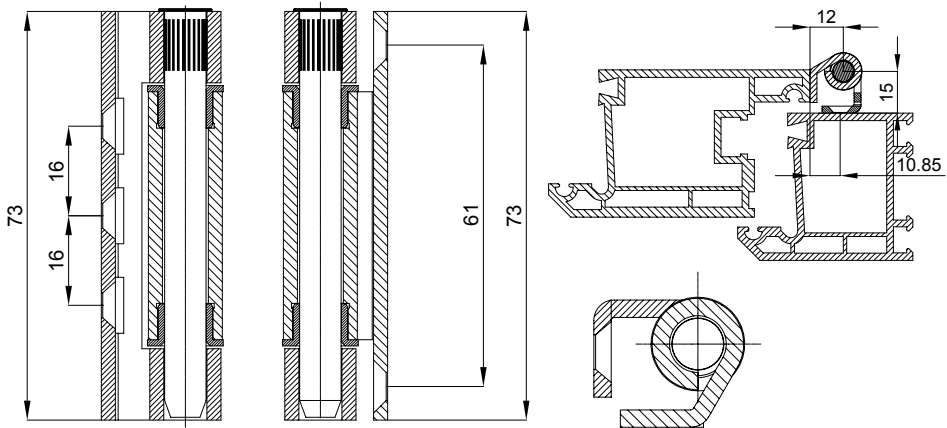


STEEL HINGE 73
(Frame Hinge)

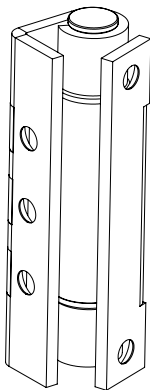
STEEL HINGE 73

Off-Centered

SYSTEM PROPERTIES

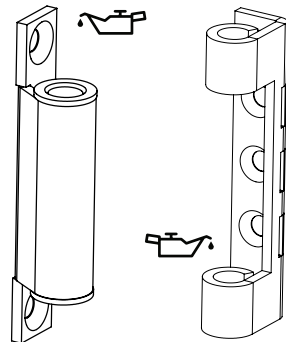


- Long-lasting, trouble-free function through advanced design with steel body and plastic bushings
- Corrosion-resistant plating and painting system surface
- Plating: Alkali ZINC-Plated Surface 8-20 μ
- The hinges can be used for both right and left-handed doors.



1-20004-00-00^A
STEEL HINGE 73
OFF-CENTERED

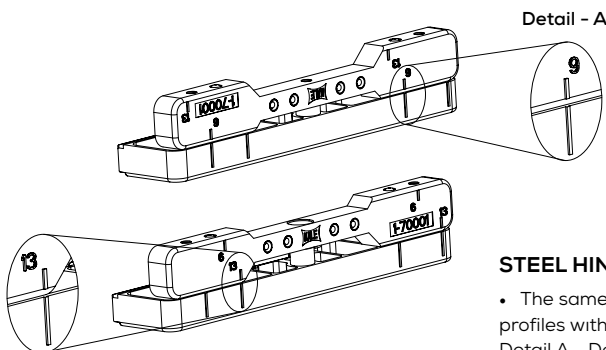
Δ5: BLACK (RAL 9011)
6: BROWN (RAL 8014)
8: WHITE (RAL 9016)
9: BEIGE (RAL 1001)
A: LIGHT BROWN (RAL 8003)



STEEL HINGE 73
(Sash Hinge)

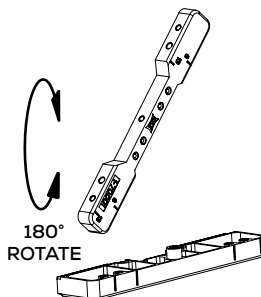
STEEL HINGE 73
(Frame Hinge)

INSTALLATION



Detail - B

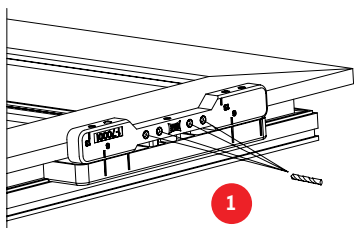
Art. Nr.: 1-70001-00 73
STEEL HINGE 73 TEMPLATE



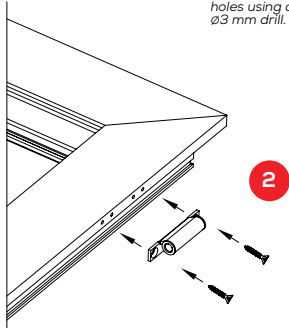
180°
ROTATE

STEEL HINGE 73 TEMPLATE

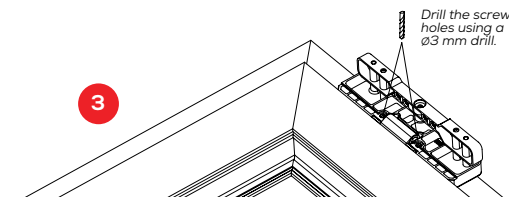
- The same installation template is used in profiles with locking size 9mm or 13mm. (See Detail A - Detail B)
- All screw holes are with bushings depending on which size you want to use, install 9 or 13 on the part which is to be replaced.
- By using the template and rotating the part 180° in a way that the lines fit one another.



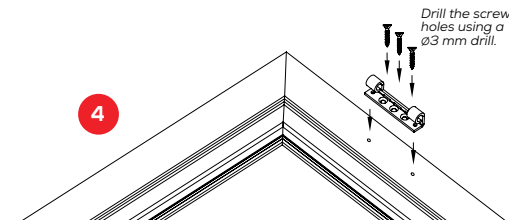
1
Drill the screw holes using a ø3 mm drill.



2



3



4

1 Use the template to drill the steel hinge 73 (sash) holes with ø3 drill.

2 Install the steel hinge 73 (sash) using the screws.

3 Use the template to drill the steel hinge 73 (frame) holes with ø3 drill.

4 Then install the steel hinge 73 (frame) using the screws.

5 Connect the wing to the case with the steel hinge 73 pins.

MAINTENANCE

Lubricate the moving parts twice a year.

KALE KAPI PENCERE

Merkez: Vudİstanbul, Ayızoađı Mah. Cendere Cad. No: 109-F/1-E Blok 34396 Sarıyer - İstanbul - Türkiye
Fabrika: Çerkezköy - Kırcazlıç OSB Mah. 103. Cad. No: 22 59520 Kapaklı - Tekirdađ - Türkiye
Tel: +90 212 705 80 00 Faks: +90 212 705 79 78

Kale Kapi Pencere bir Kale Kilit ve Kilit Sanayi A.Ş. markasıdır.

Çađrı Merkezi: **444 0 243**

www.kalepensistem.com.tr
info@kalepensistem.com.tr