

KD040/30-281 B

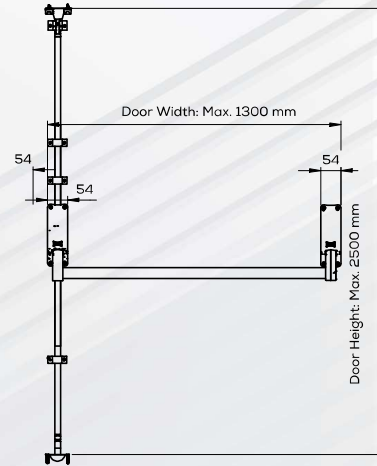
SINGLE-LEAF – VERTICALLY LOCKABLE
(W/OUT CYLINDER)



TECHNICAL SPECIFICATIONS

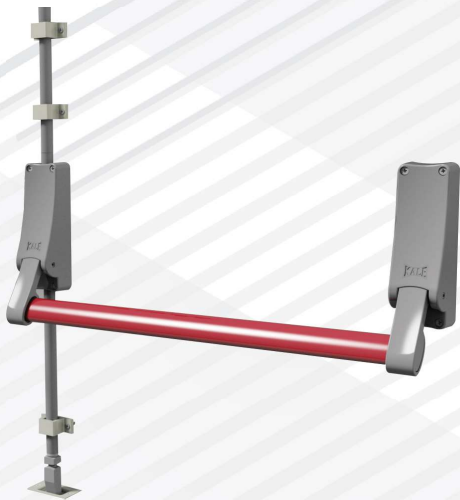
KD040/30-281 B

BODY	Aluminium
ASSEMBLY	For single-leaf doors and fire doors
INTENDED USE	Suitable for left or right-hand doors. Suitable for doors at a width of up to 1,300 mm. The tubular steel bar can be cut to a width of the door on the site.
ON A FIXED LEAF	Lockable with a steel bar from the lower and upper points, lockable with a locking latch on a movable leaf.
OPTIONAL	2-key arm unit lockable from outside



KD040/30-281 B-1-K

SINGLE-LEAF – VERTICALLY LOCKABLE
(W/OUT CYLINDER)
(GRAY BODY-RED BAR) (W/OUT CYLINDER)



KD040/30-281 B-2-G

SINGLE-LEAF – VERTICALLY LOCKABLE
(W/OUT CYLINDER)
(BLACK BODY-GRAY BAR) (W/OUT CYLINDER)



KD040/30-281 B-2-K

SINGLE-LEAF – VERTICALLY LOCKABLE
(W/OUT CYLINDER)
(BLACK BODY-RED BAR) (W/OUT CYLINDER)



KD040/30-281 B-2-S

SINGLE-LEAF – VERTICALLY LOCKABLE
(W/OUT CYLINDER)
(BLACK BODY-BLACK BAR) (W/OUT CYLINDER)

