

±0.05	±0.1	±0.2	±0.3	±0.4	±0.5	±0.6	±0.8	±1.0	±1.2	±1.5	±2.0	±2.5	±3.0	±4.0	±5.0	±6.0	±8.0	±10.0	±12.0	±15.0	±20.0	±25.0	±30.0	±40.0	±50.0	±60.0	±80.0	±100.0	±120.0	±150.0	±200.0	±250.0	±300.0	±400.0	±500.0	±600.0	±800.0	±1000.0
±0.05	±0.1	±0.2	±0.3	±0.4	±0.5	±0.6	±0.8	±1.0	±1.2	±1.5	±2.0	±2.5	±3.0	±4.0	±5.0	±6.0	±8.0	±10.0	±12.0	±15.0	±20.0	±25.0	±30.0	±40.0	±50.0	±60.0	±80.0	±100.0	±120.0	±150.0	±200.0	±250.0	±300.0	±400.0	±500.0	±600.0	±800.0	±1000.0

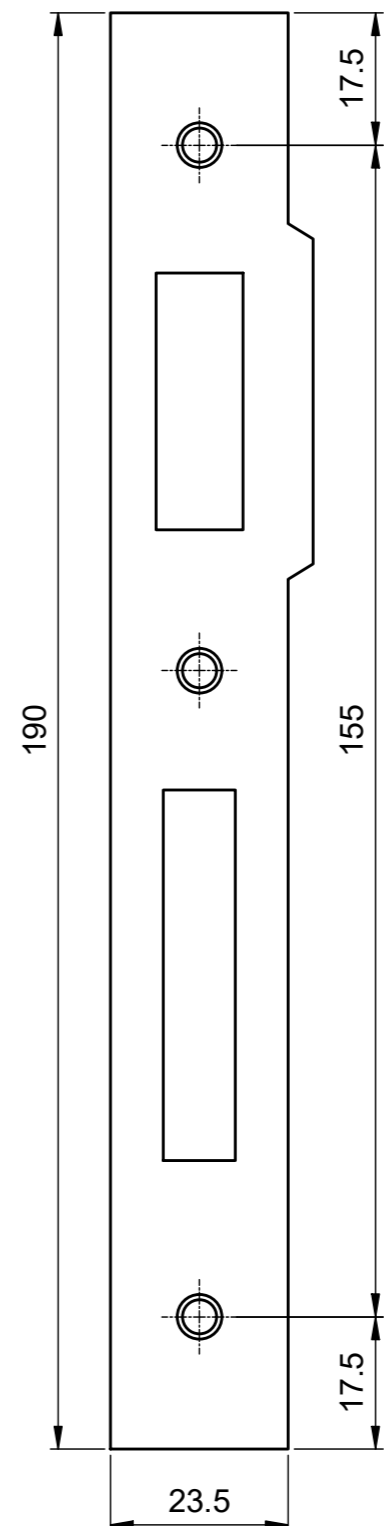
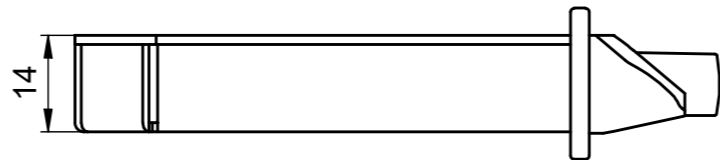
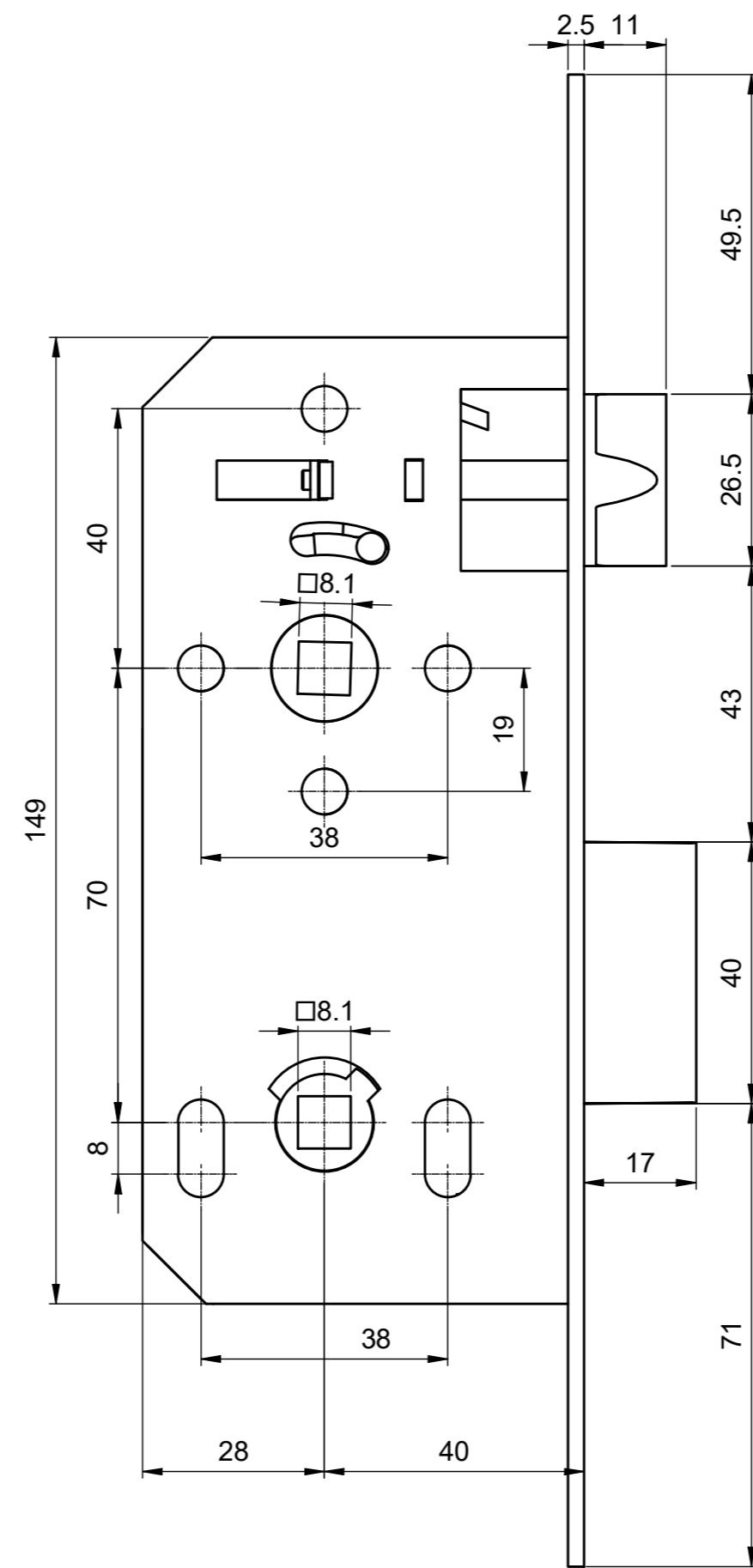
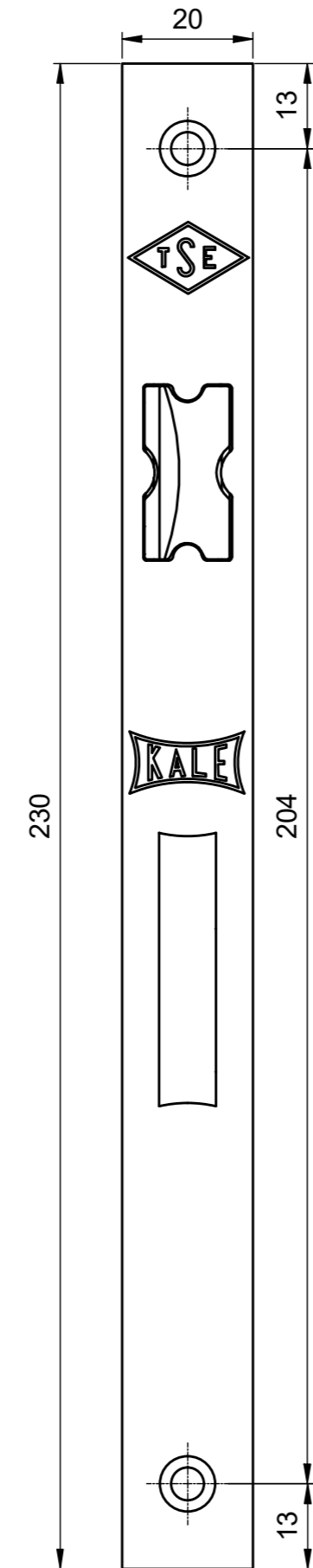
Drawn on computer, modifications by hand are not allowed!
 This document is in the property of KALE KILIT ve KALIP SANAYI A.Ş.
 Third parties without written authority from the proprietor.

SEKİNCİ İZLENİMİNİN YERİNE KULLANILMAMASI İÇİN UYARI
 DİN ISO 2768MT 530 +3 -6
 İZLENİM -1
 ORTA/ORTA-İ
 KABA/CORSE -1

Bilgiyaar ile çizilmiştir, elle düzeltilme yapılmaz!
 KALE KILIT ve KALIP SANAYI A.Ş. mal olan bu dokümanın tamamını
 kullanılmaması veya bölümü sabit olarak verilmesi yasaktır ve yasal işlemiyle sonuçlanabilir.

±0.05	±0.1	±0.2	±0.3	±0.4	±0.5	±0.6	±0.8	±1.0	±1.2	±1.5	±2.0	±2.5	±3.0	±4.0	±5.0	±6.0	±8.0	±10.0	±12.0	±15.0	±20.0	±25.0	±30.0	±40.0	±50.0	±60.0	±80.0	±100.0	±120.0	±150.0	±200.0	±250.0	±300.0	±400.0	±500.0	±600.0	±800.0	±1000.0
±0.05	±0.1	±0.2	±0.3	±0.4	±0.5	±0.6	±0.8	±1.0	±1.2	±1.5	±2.0	±2.5	±3.0	±4.0	±5.0	±6.0	±8.0	±10.0	±12.0	±15.0	±20.0	±25.0	±30.0	±40.0	±50.0	±60.0	±80.0	±100.0	±120.0	±150.0	±200.0	±250.0	±300.0	±400.0	±500.0	±600.0	±800.0	±1000.0

Fonksiyonel Ölçüler / Functional Dimensions



Karşılık
Karşılık 1.5 mm
Striking plate
Thickness:1.5 mm

Sembol Index	Tarih Date	Model Değişiklik No E.C.R. No	Değişiklikler Revisions		Cizen Drawn	Kontrol Checked
Model/Model:						
Malzeme/Material:					Ölçek/Scale:	
Genel Tol./Gen.Tol	DIN ISO 2768-1	Tarih/Date	İmza/Signature	Parça Adı/Part Name		
Cizen/Drawn						
Kontrol/Checked						
Onay/Approved						
Resim No/Drawing No:			Parça No/Part No:			

